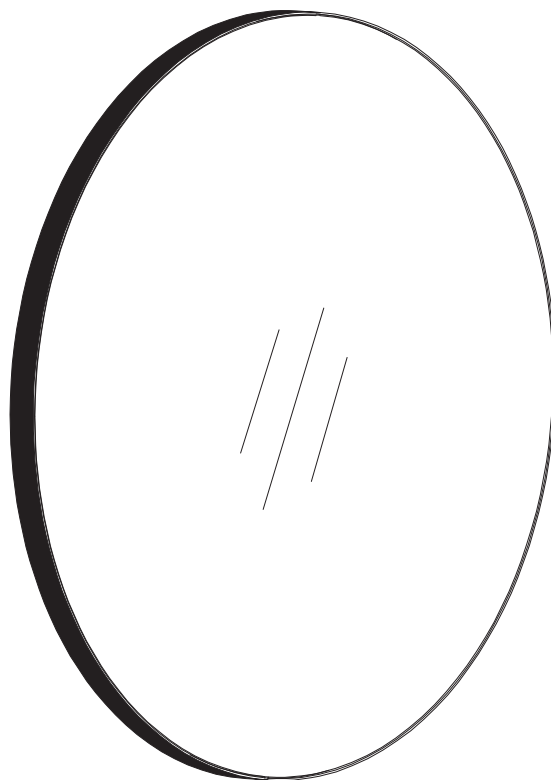


# INSTALLATION INSTRUCTIONS

## MIRROR ROUND



**MODEL# MRD**



**READ ALL INSTRUCTIONS BEFORE UNPACKING THE PRODUCT**



INSTRUCTIONS THAT, IF IGNORED, COULD RESULT IN DEATH OR SERIOUS INJURY CAUSED BY INCORRECT HANDLING OR INSTALLATION OF THE PRODUCT. THESE INSTRUCTIONS MUST BE OBSERVED FOR SAFE INSTALLATION.

**THIS INSTALLATION MANUAL IS COMPATIBLE WITH THE FOLLOWING MODELS**

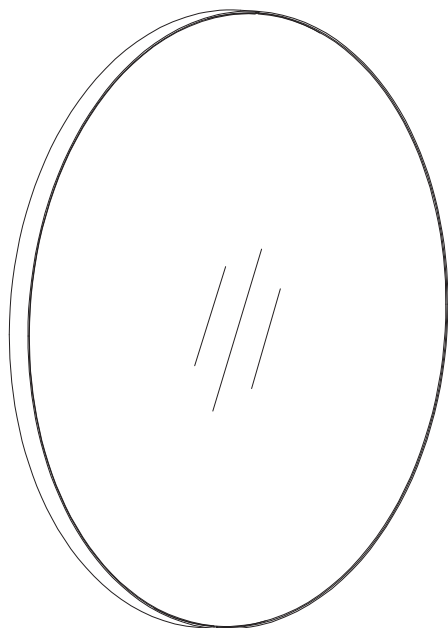
- MRD1818
- MRD2121
- MRD2424
- MRD2828
- MRD3030
- MRD3232
- MRD3636

We reserves the right to change, update, modify, alter, redesign this manual/product or its policies without prior notice!  
It is your responsibility to visit the website to download or contact customer service for the most updated version of the installation instructions.

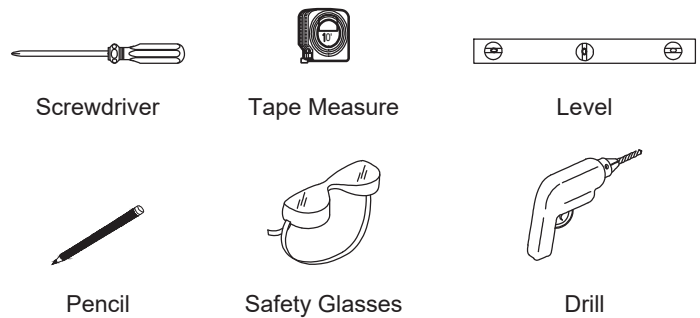
We shall not be liable for any injuries or property damages in connection with this product during installation or use of this product!

- Limited warranty is void on any commercial installation.
- We are not responsible for local code compliance for this product.
- Building and plumbing codes may vary from state-to-state in accordance to your location.
- We are not responsible for providing any compliance certifications.
- We are not responsible to provide any type of certifications for this product.
- Under no circumstances we shall not be liable for any and all incidental damages sustained in connection with this product Neither manufacture, nor distributor, nor retailer is responsible for water damage or flood caused due to use of this product.
- Under no circumstances We shall not be liable for any and all fees, cost of installation/re-installation/removal, subsequent damage or transportation in case of the product defect.

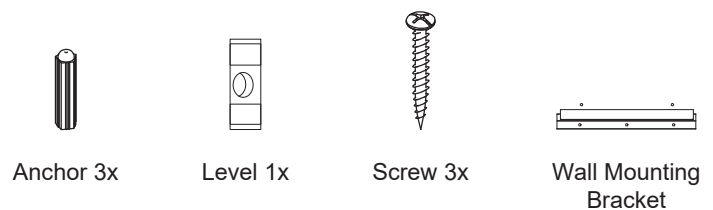
**MIRROR**



**SUGGESTED TOOLS AND MATERIALS**

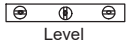
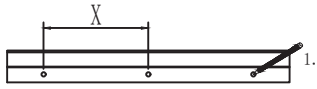


**PARTS & HAREWARE INCLUDED**



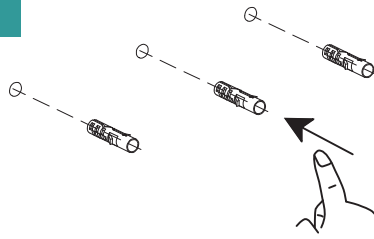


1



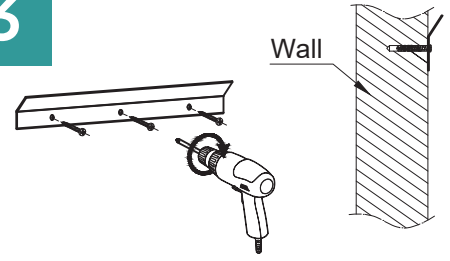
1. Level the hanging cleat with a level ruler and mark the installation hole position of the hanging cleat with a pencil.
2. Drill holes.

2



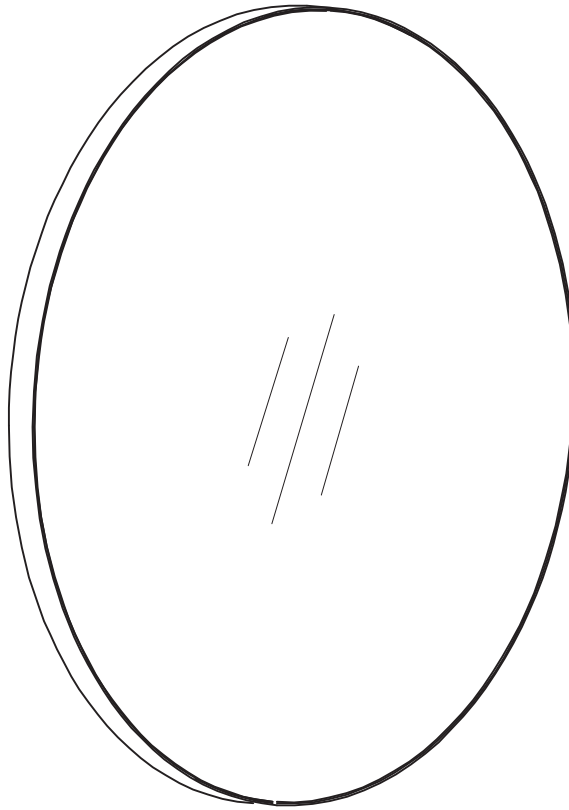
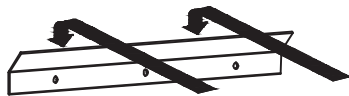
Insert the anchors into the wall.

3



Install the hanging bracket into the wall. Use 5x45mm screws to hanging bracket to wall.

4



Hang the mirror onto the wall.



206 WEMBLY ROAD - NEW WINDSOR, NY 12553  
P: 718.602.6060 F: 718.963.2082 - E: INFO@FINEFIXTURES.COM  
TOLL FREE: 1.877.8FIXTURES

[FINEFIXTURES.COM](http://FINEFIXTURES.COM)

